



ALASKA DIVISION OF HOMELAND SECURITY & EMERGENCY MANAGEMENT

SITUATION REPORT 23-331 • November 27, 2023



Toll-Free 1.800.478.2337

Anchorage Area 907.428.7000

SEOC 907.428.7100

<p><u>SEOC Preparedness Level</u></p> <p>Level 2 – Heightened Awareness</p>	<p>http://ready.alaska.gov</p>	<p><u>National Terrorism Advisory System:</u></p> <p>Read the NTAS Bulletin here</p>
<p><u>Maritime Security (MARSEC)</u> Level: 1- Minimum Appropriate Security Measures</p>	<p>WHO Novel Coronavirus Pandemic (COVID-19): 2019 Novel Coronavirus</p>	<p><u>Alaska Military Installation Force Protection Level:</u> FPCON Bravo</p>

(Significant changes from previous situation reports are red.)

Significant Issues:

Wrangell Landside Disaster:

Emergency response and recovery operations continue. The City of Coffman Cove declared a local disaster for landslide and flood damage in their community from the same southcentral weather system that triggered the Wrangell landslide and on Saturday, November 25, Governor Dunleavy declared a disaster emergency for Coffman Cove. An incident specific Situation Report is attached.

Diomedes – Potential Building Structural Collapse

Yesterday the City of Diomedes contacted SEOC reporting the two-story City building elevated on stilts was leaning and was in danger of collapsing into the community school and fuel lines. SEOC contacted the school district and engaged the Alaska Department of Environmental Conservation, along with regional tribal authorities.

State of Alaska Department of Health (DOH)

The DOH stands ready to assist with all aspects of public health and in the event of a public health emergency, supported by the SEOC and other state departments as required. For current information, see:

<https://health.alaska.gov/dph/Pages/default.aspx>

<https://health.alaska.gov/dph/Emergency/Pages/prepared/default.aspx>

NTAS Bulletin

The U.S. Department of Homeland Security issued an updated National Terrorism Advisory Bulletin on May 24, 2023. The current and expired bulletins can be viewed at the below link.

<https://www.dhs.gov/national-terrorism-advisory-system>

Travel Alerts and Conditions

For current driving conditions, dial 511 or link to <https://511.alaska.gov/>

Barry Arm Landslide / Tsunami Risk

For the latest information on the Barry Arm Landslide and Tsunami risk, click here:

<https://dggg.alaska.gov/hazards/barry-arm-landslide.html>

Earthquakes

United States Geological Service (USGS) Earthquake Information: <http://earthquake.usgs.gov/>

National Tsunami Warning Center: <http://tsunami.gov/>

Alaska Volcanoes

Great Sitkin Alert Level: **Watch** and Aviation Color Code: **Orange**

Shishaldin Alert Level: **Watch** and Aviation Color Code: **Orange**

Trident Alert Level: **Advisory** and Aviation Color Code: **Yellow**

For Alaska Volcano updates, go to: <https://www.avo.alaska.edu/>

Air Quality Index (AQI) Advisories

For the most up to date Air Quality Index Advisories:

<http://dec.alaska.gov/Applications/Air/airtoolsweb/Home/Index>

Spills of Oil and Hazardous Substances

The Alaska Division of Environmental Conservation (ADEC) Spill Prevention and Response page is located at:

<https://dec.alaska.gov/spar/>

Alaska Cyber Security Information

State Employees may sign up for cyber security notifications and alerts at

<https://oit.alaska.gov/security>

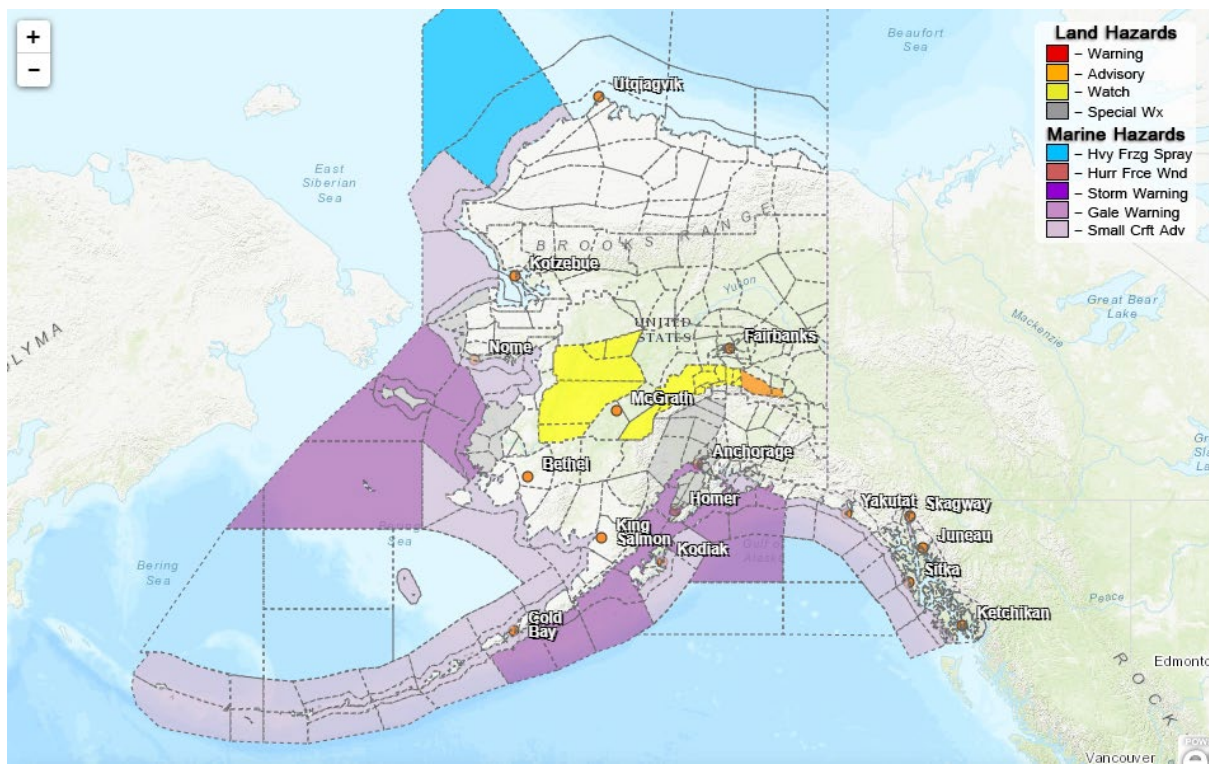
Cybersecurity and Infrastructure Security Agency (CISA)-Cybersecurity Services and Tools:

www.cisa.gov/free-cybersecurity-services-and-tools

Avalanche Hazards:

- **Turnagain Pass – Considerable at altitudes above 2500'; Moderate at mid and lower altitudes**

Significant Weather:



Wind Advisory:

- **Eastern Alaska Range North of Trims Camp** – Advisory in effect until today at noon

High Wind Watch:

- **Northern Denali Borough; North Slopes of the Western Alaska Range** – Watch remains in effect from Tuesday morning until late Tuesday night

Winter Storm Watch:

- **Middle Yukon Valley; Lower Yukon and Innoko Valleys** – Watch in effect from Tuesday morning through Tuesday evening

Special Weather Statement:

- **Kivalina and Red Dog Dock; Shishmaref; Bering Strait Coast; Southern Seward Peninsula Coast; Yukon Delta Coast; St Lawrence Island** – West Coast elevated water levels Monday into Tuesday
- **Anchorage; Matanuska Valley; Western Kenai Peninsula; Susitna Valley** – Rain changing to snow today with gusty southerly winds

Flood Advisory:

- **Anchorage** – Advisory in effect until noon Monday

For more information and the most current weather, Watches / Warnings / Advisories go to:

<https://www.weather.gov/arh/>

The Next Situation Report will be **November 28, 2023**. A significant change in the situation or the threat level will prompt an interim report. This report is posted on the internet at

<https://ready.alaska.gov/sitrep>.

To register for email distribution, go to <http://list.state.ak.us/mailman/listinfo/dhsem.situation.report>. Direct questions regarding this report to the SEOC at 907-428-7100 or seoc@alaska.gov